



# KALYANAM

## COURTYARD

PROJECT BY

KALYANAM ASSOCIATE & DEVELOPERS PVT. LTD.





KALYANAM  
COURTYARD







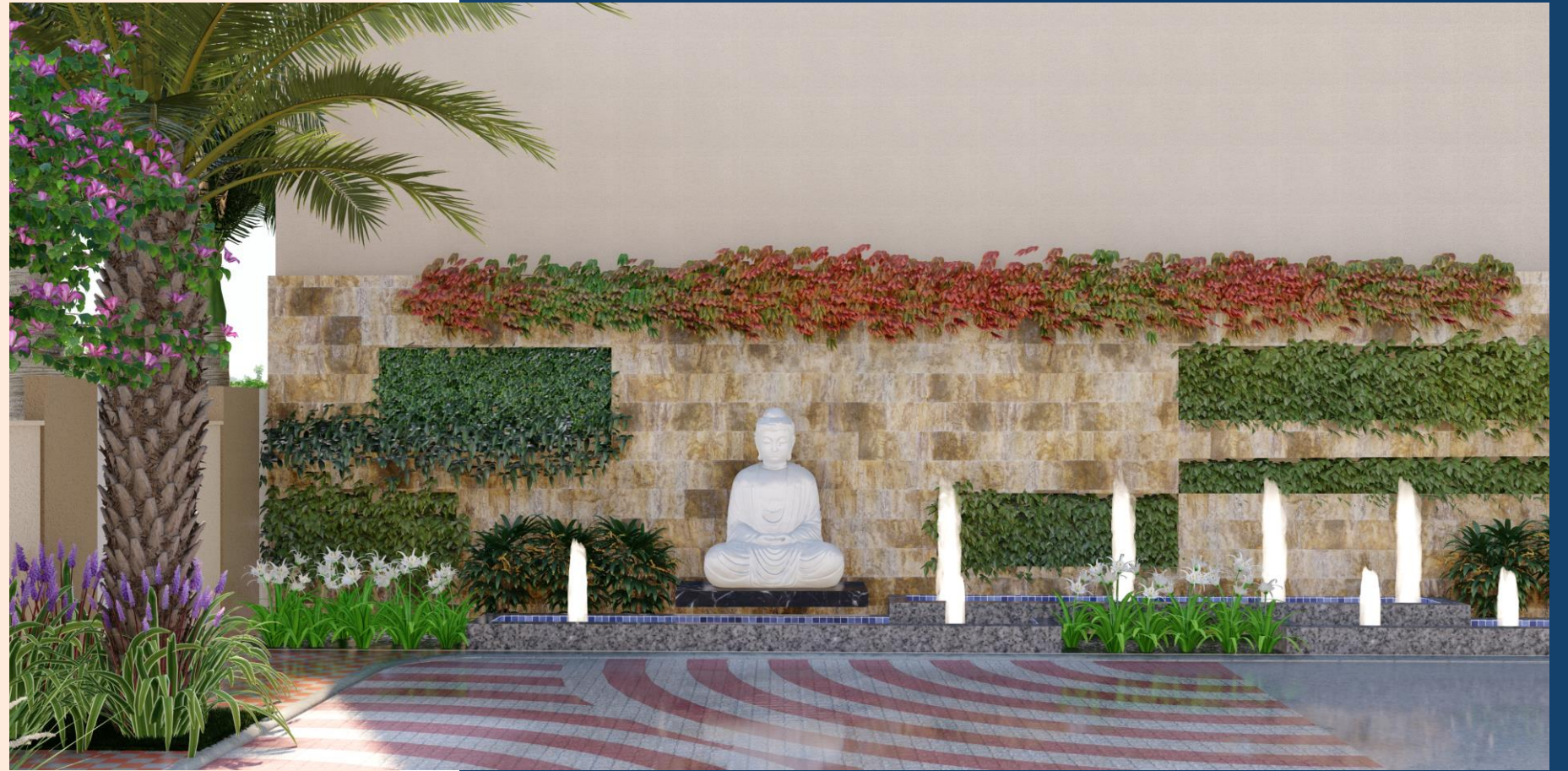
Elevate  
Life in  
an Elite  
Way

KALYANAM ASSOCIATE & DEVELOPERS are presenting you Kalyanam Courtyard, our newest independent triplex township, spread over 1 acres of land with an ease-of-living approach for Indore. The project is being developed at one of the most fruit-bearing and superbly connected locations in Indore, i.e., Rau Circle. It comprises spacious 3.5 BHK premium mansions with every essential amenity offered under a reasonable pricing range.





KALYANAM  
COURTYARD



## Landscaped Entrance Avenue

Welcoming residents and visitors with lush greenery and thoughtfully landscaped features, the avenue offers a visual symphony that sets the tone for what lies beyond.





KALYANAM  
COURTYARD



Row houses:  
closely knit Villa lifestyle





KALYANAM  
COURTYARD



## Project Highlights

The mansions are designed in a ultra luxurious 3.5 BHK Duplex format for an elite independent experience.

- Magnificent Entrance Gate
- Secured & CCTV Surveillance Campus
- Clubhouse (Gymnasium & Swimming Pool)
- Pathways, Sit-outs
- Wide RCC Roads
- Concealed Electric Cabling
- Designer Street Lights
- Adequate Water Supply
- Modern Sewage Disposal
- Lush Landscaped Gardens
- Vastu-Compliant Layout
- Security Guard Cabin
- Smart IOT Enabled Villas





KALYANAM  
COURTYARD



Bird Eye View





KALYANAM  
COURTYARD



## Splendid Homes in Serene Surroundings

Discover our exquisite villas, set in serene surroundings where luxury meets nature for an unmatched living experience.





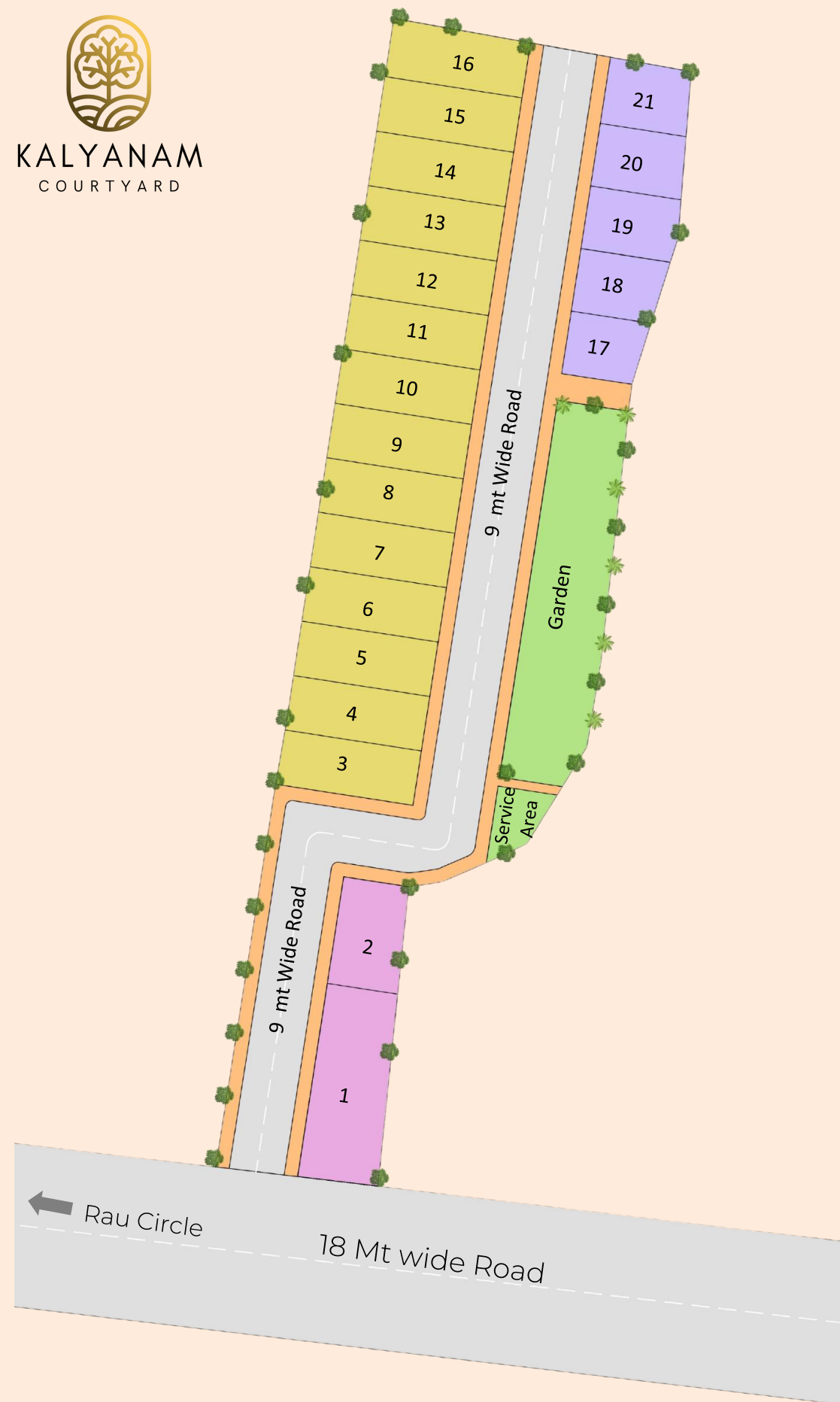
KALYANAM  
COURTYARD



## Lush Green Garden

Garden features a beautifully landscaped setting with scenic pathways, charming sitting gazebos, lush planters, and serene spots for relaxation.

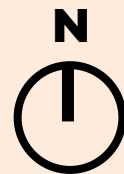




COM 27' x 62'6" = 1687 Sqft (Avg.)

20' x 50' = 1000 Sqft

23' x 33'8" = 780 Sqft (Avg.)







KALYANAM  
COURTYARD



## Exceptionally smart: IOT Enabled Smart homes

Equipping the row house with smart home Alexa devices and supporting infrastructure, including data cabling throughout the house, Smart home controller, a video door phone, and more, to enhance Smart living convenience.







KALYANAM  
COURTYARD



## The Perks of an Elite Lifestyle

Experience the perks of an elite lifestyle with our exclusive clubhouse, featuring a state-of-the-art gym, a refreshing swimming pool, and a vibrant commercial space for shops and offices, all designed to elevate your living experience.





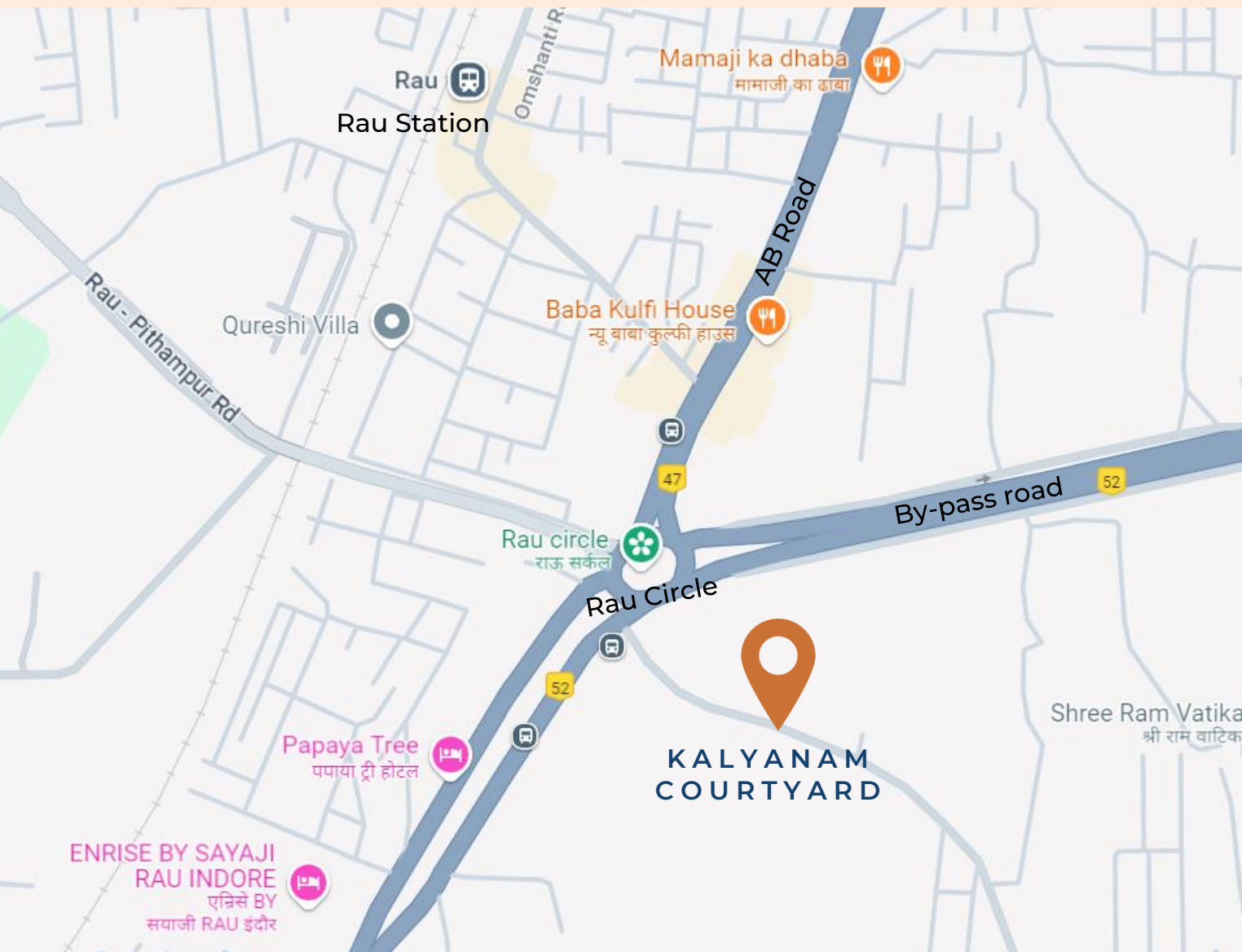
KALYANAM  
COURTYARD







KALYANAM  
COURTYARD



## Location

- Rau Circle: 0.25 Km
- Rau Railway Station: 1Km
- Hotel Enrise by Sayaji : 1.8 Km
- Medi-caps University : 1.8 Km

## PROJECT BY

KALYANAM ASSOCIATE & DEVELOPERS PVT. LTD.

PRIYANK GAGRANI

9755222224

## ARCHITECT



PLADECO  
CONSULTANTS

MONAL JAIN  
URBAN PLANNER

SWAPNIL JAIN  
ARCHITECT

KHUSHBOO JAIN  
INTERIOR DESIGNER

### Disclaimer:

- The brochure is for restricted private circulation only and does not constitute an offer and is not to be considered as a legal document with obligations for specific performance. It is meant for the purpose of conceptual presentation only.
- The dimensions shown in the brochure may be changed by the developer if the developer deems it fit.
- All images in the brochure, are merely simulated interpretations using computer graphics to enhance the customer understandings and are not actual images and may not represent actual deliverables.
- The Developer shall have the exclusive right to (a) change, expand or revise or abandon altogether, the project or part of the project, (b) modify, alter any details, amenities, facilities, etc. of the project, including layout, gardens, internal roads & entrance/s, etc.
- The architect are not bound by any information provided in this brochure.